

FIRSTmix 100



The cost effective automatic gyroscopic mixer



By providing reliable and consistent mixing results at a low lifetime cost, the FIRSTmix 100 automatic gyroscopic mixer is an ideal solution for small businesses seeking to optimize their mixing processes while minimizing expenses.

The COROB FIRSTmix 100 automatic gyroscopic mixer is the ideal equipment for paint stores seeking a reliable, high-performing solution with low lifetime costs.

The unit can handle round and square cans of various sizes, weighing up to 35 kg, which makes it a great option for a wide range of applications and for growing businesses and markets.

With its high-quality components and durable frame, the COROB FIRSTmix 100 is built to last and provide worry-free performance for years to come, minimizing the need for maintenance.

The automatic clamping system not only enhances operator safety but also makes operations effortless.

The hinge door provides a wider view during the mixing cycle, allowing the operator to easily monitor the process.

Automatic pressure clamping settings, which are based on can size, ensure that cans are secured in place for optimal mixing.

The extractable lower tray facilitates the loading of cans and can be readily integrated with a conveyor, further enhancing the ease of use and efficiency of the mixer.



AFFORDABLE EFFICIENCY

A high-performance automatic mixer that improves your output on a budget



PROVEN DURABILITY

The robust design and reliable technology provide years of worry-free service



EFFORTLESS OPERATION

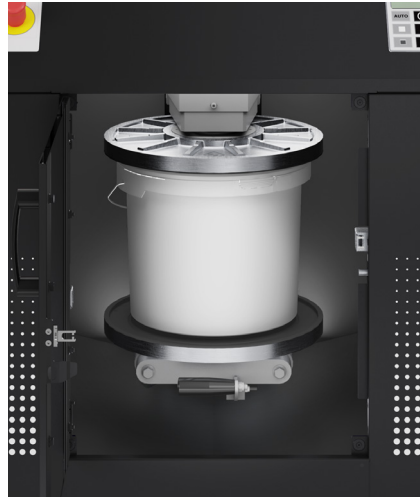
Automatic clamping and ergonomic design make can handling safe and easy

ABOUT US

COROB is a global leader with a long and successful history in developing, manufacturing and delivering high-tech dispensing and mixing solutions for the widest range of tinting applications. Our offering is supported by a global service network making COROB a total solution provider.



FIRSTmix 100



Technical data

Business environment	Small paint stores / Growing markets and paint stores
Volume output	Low / Medium
Type	Automatic gyrosopic mixer
Max can weight [kg] (lbs)	35 [77]
Can size [mm] (in)	Height: min 100 (4), max 400 (15.8) Diameter: max 340 (13.4)
Can type	Round, square
Mixing motor power [hp] (kW)	0.75 (0.55)
Certification	CE/UKCA
Door type	Hinge door
Dimensions (WxDxH) [mm] (in)	780 x 830 x 1040 (30.7 x 32.7 x 40.9)
Footprint [sqm] (sq ft)	0.65 (6.96)



A WORD ON GYROSCOPIC MIXING

Gyrosopic mixing takes place by means of the simultaneous rotation of the mechanism along two axes aligned perpendicularly to each other. The resulting motion enables the perfect product transfer inside the can and the homogeneous mix of the colorant with the various base types.

The solution is suitable for difficult base products in terms of viscosity: from latexes to heavy silicates. The best for medium to bigger sized cans and for cans of different shapes (round, oval and square).